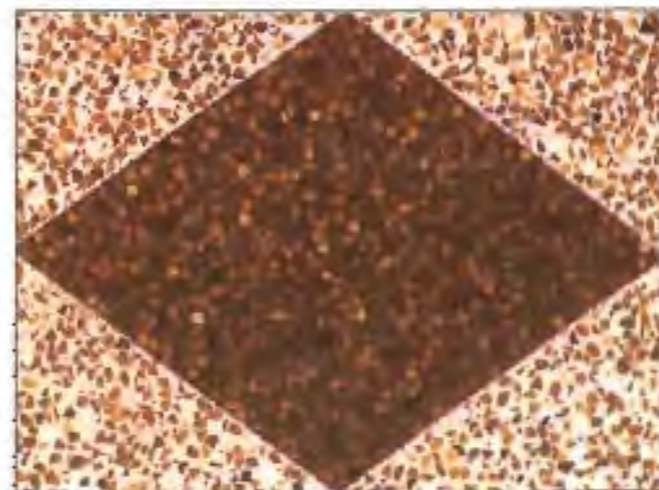
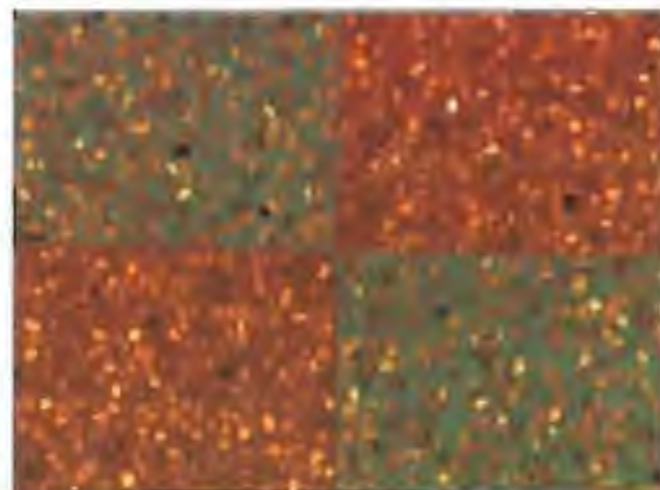
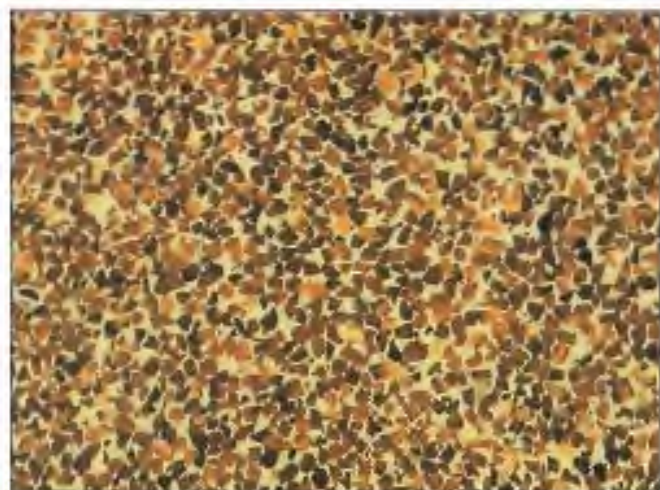


PAVIMENTAZIONI FLOORING - FINITURE DECORO



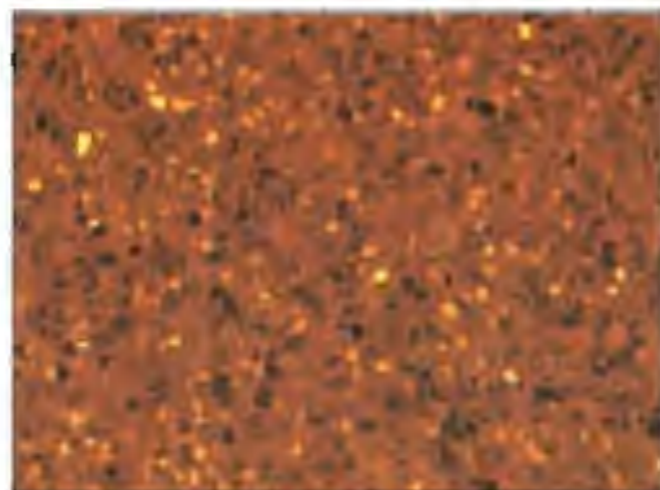
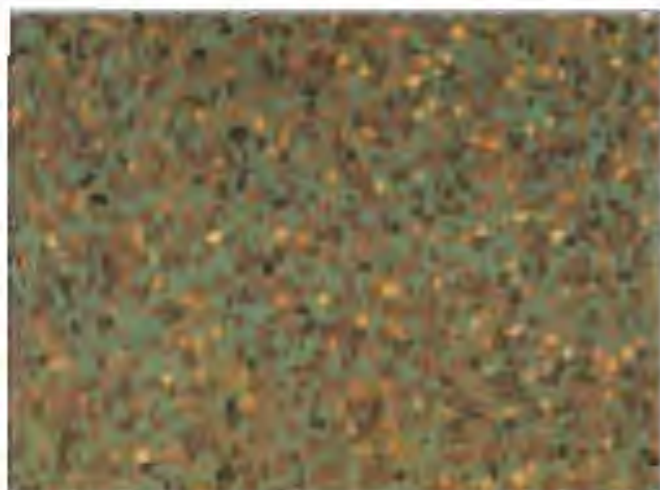
NAVAL AND INDUSTRIAL COMPANY SINCE 1928



PAVIMENTAZIONE AUTOLIVELLANTE IN RESINA
SELF LEVELLING - RESIN FLOORING

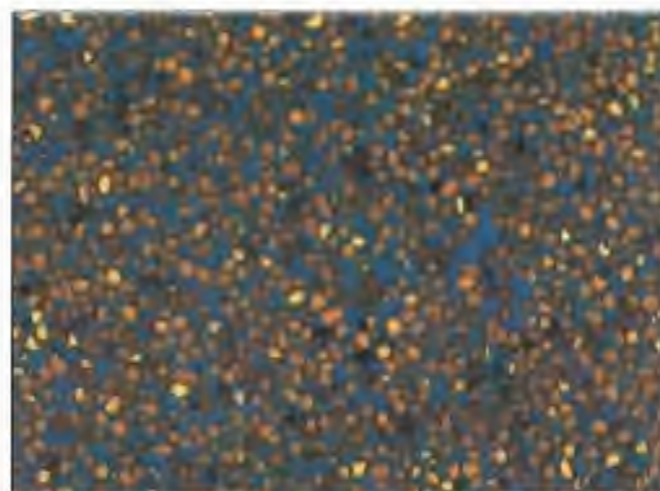
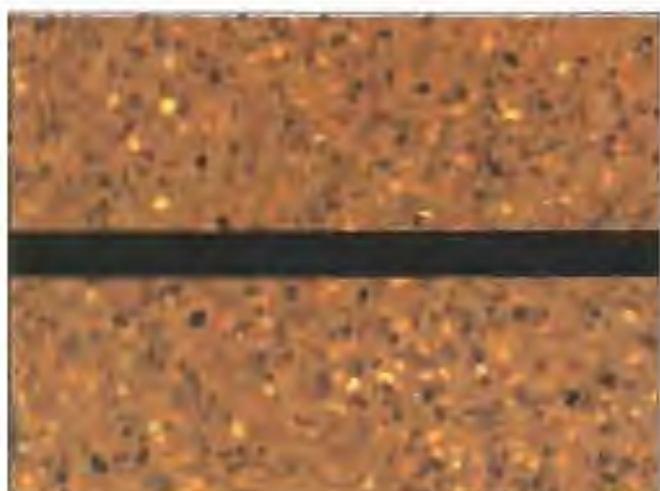
FLEXIGEL

Spessore / Thickness m/m 2+10
 Flessibilità ed elasticità / Flexibility and elasticity
 Alta resistenza abrasiva / Abrasive high resistance
 Autoastinguente / Self extinguishing
 Resistenza agli agenti atmosferici
 Resistance to the atmospheric agents
 Resistenza ai salti termici
 Resistance to the changes of temperature



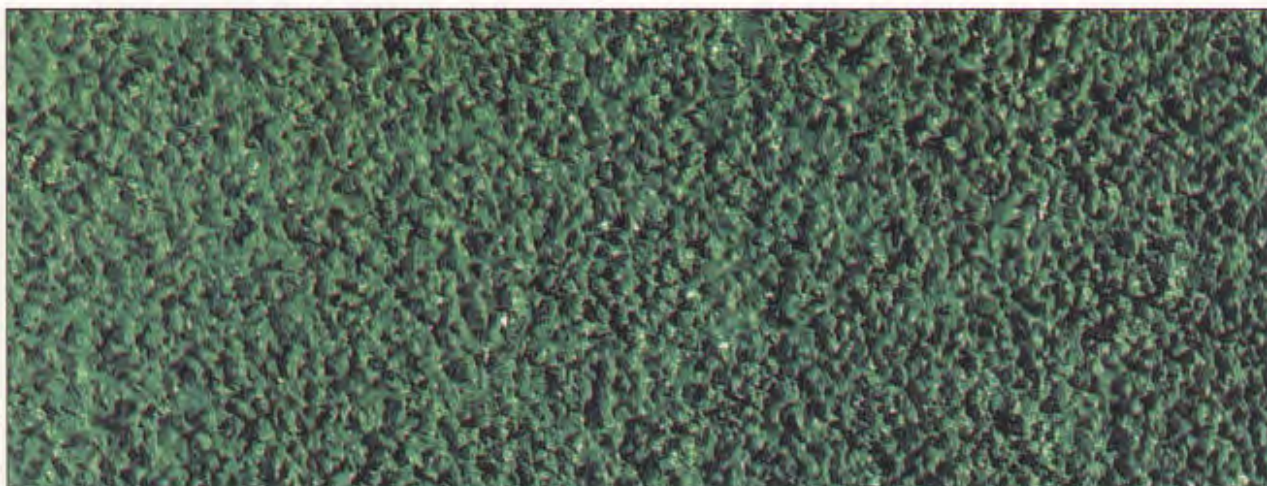
CARATTERISTICHE TECNICHE TECHNICAL CHARACTERISTICS

natura del veicolo vehicle type	elastomeri poliuretanoici polyurethanic elastomers
solidi in volume / solid content	100%
rapporti di impiego in peso mixing ratio (weight)	base 73.5 cat. 26.5
pot life a 23°	60
punto di infiammabilità flash point	non infiammabile no inflammable
peso specifico / specific weight	1.35-0.05 kg/dm
spessore film secco dry-film thickness	2500-3000 micron
indurimento a spessore / drying time	24 ore
colori / colour	colori vari / several colours



PRODOTTI PER RIVESTIMENTO DI
PONTI IN ACCIAIO O LEGA LEGGERA
LEGNO VETRORESINA

PRODUCTS FOR COATING OF
STEEL-DECKS OR LIGHT-ALLOY DECKS
WOODEN AND FIBER GLASS DECKS



Rivestimenti per pavimentazioni sportive. - *Sports floors.*

